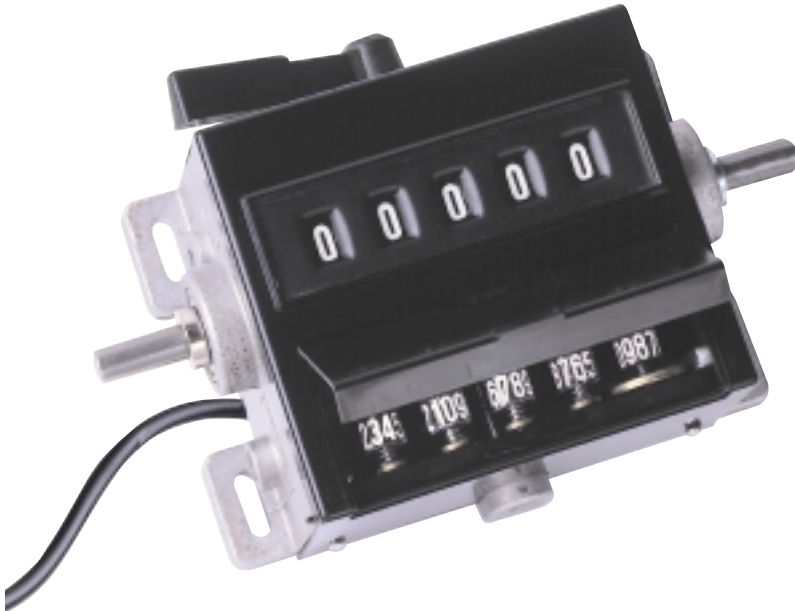


# ELECTRIC RELEASE MECHANICAL COUNTERS


# PDB - PDG - PDM

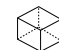


Available in the following versions:

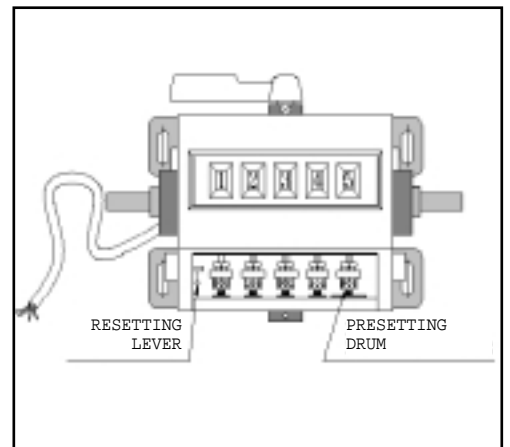
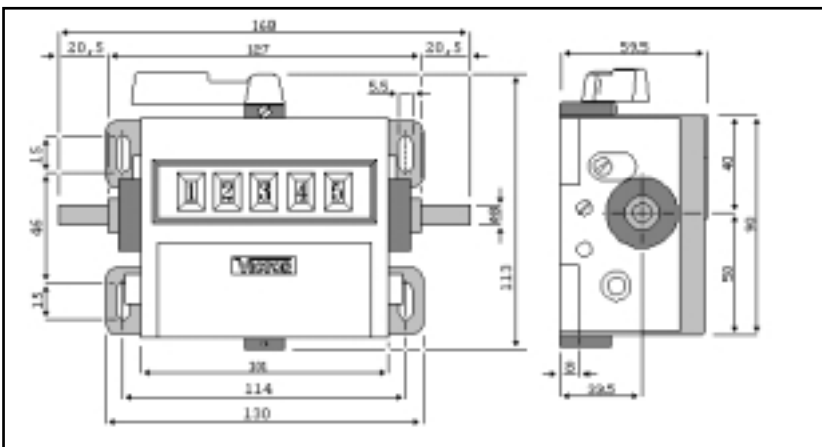
## STROKES-COUNTER – REVOLUTION COUNTER – LENGTH MEASURING

- **5-digit h = 8 mm display**  
white digits on black background
- **quick resetting lever**  
for simultaneous resetting and re-entering of the preset value.
- **materials**  
aluminum die-cast  
ABS casing  
metal internal kinematic motion devices
- **contact range**  
1 AMP, 24 V CC;

 gr. 1,100

 mm 175 x 110 x 65

Upon reaching the preset value, a micro-switch is activated according to the command options and variants described in the following pages.



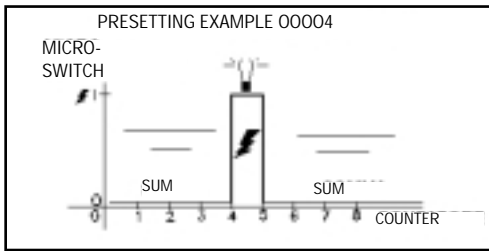
PROGRAMMERS

TYPE	COD.	MOD.	GEAR RATIO	ROTATION	SPEED
STROKES COUNTERS	FD0101/104	PDB 05 Δ (*)	/	right	500 blows / min
	FD0101/103	PDB 05 Δ (*)	/	left	500 blows / min
REVOLUTIONS INDICATORS	FD0100/502	PDG 05 Δ (*)	1/1	right	5000 revol. / min
	FD0100/501	PDG 05 Δ (*)	1/1	left	5000 revol. / min
METERS	FD0100/504	PDM 05 Δ (*)	1/5 (with red decimal) match with wheels, dev=mm 500	right	500.0 meters / min
	FD0100/503	PDM 05 Δ (*)	1/5 (with red decimal) match with wheels, dev=mm 500	left	500.0 meters / min
	FD0100/506	PDM 05 Δ (*)	2/1 (without decimal) match with wheels, dev=mm 500	right	500.0 meters / min
	FD0100/505	PDM 05 Δ (*)	2/1 (without decimal) match with wheels, dev=mm 500	left	500.0 meters / min

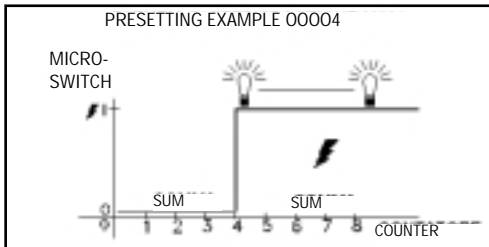
(\*) - variants (see list on page 2)



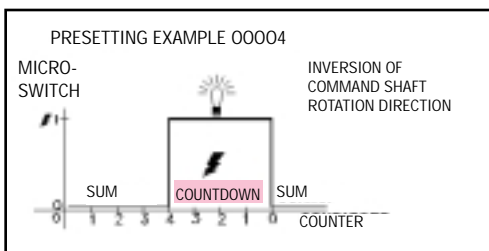
## VARIANTS:



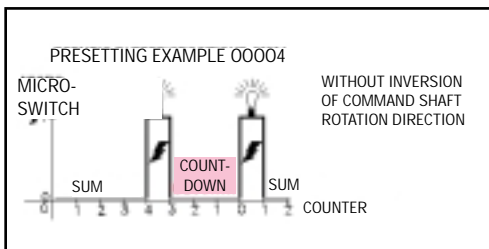
Δ **C** - 5-digit presetting; upon reaching the preset value, a micro-switch is activated for a **single unit duration**



Δ **E** - 5-digit presetting; upon reaching the preset value, a **permanent micro-switch** is activated. When resetting the device, the micro-switch returns to its initial position



Δ **F** - 5-digit presetting; similar to Model ΔE. When release occurs once the preset value is reached, the micro-switch remains excited until reaching the ZERO value by inverting the command shaft rotation direction. It is therefore possible to use two different circuits: one during the active phase (SUM) and the other during the negative phase (COUNTDOWN) after reaching a preset value.



Δ **PVC** - 5-digit preset = PERIODICAL VARIABLE. After presetting a chosen value (period), the totalizator adds on until reaching the preset value, then, **without inverting the rotation direction of the command shaft**, it counts down until zero, then adds on again, etc... Both when the preset value (variable) is reached and at the moment of the formation of 0000 (fixed), the device activates a micro-switch for the whole duration of a **unit**.

## OPERATION INSTRUCTIONS OF THE PRESET COUNTERS

**T**o enter the value, reset the main counter by means of the reset lever.

**O**pen the lid, free the presetting mechanism by keeping the internal lever lowered, pushing lightly on the white button.

**E**nter the desired value on the lower counter starting from the right-hand drum, the units one, then the tens drum, the hundreds, etc... This avoids possible input errors. The numbered drum rotation is easily done by turning the steel disk placed above the drum itself; start moving downward, overcoming the spring pressure, to unclutch the gears, then let turn in one direction or the other until the desired digit appears on the reference arrow.

**A**fter entering the value, free the red button to let the internal lever go back to its place.

**C**lose the lid and start again the resetting procedure of the main counter; this will reload the internal release spring.

**A**fter preparing it in this manner, upon reaching the desired number of turns, blows or meters, the device will release the micro-switch. To repeat the same value, simply operate the counter reset.

**F**or the electrical connection we state as follows:

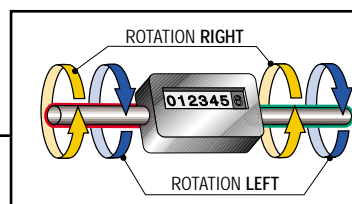
**yellow/green wire:** ground

**brown wire:** common wire, it must be always connected

**black wire:** utilisation wire, if connected it keeps the circuit Normally Opened, it switches-off in Normally Closed only when the counter reach the preset amount.

**light blue wire:** utilisation wire, it works in the opposite way referring to the black one

**Note:** **light blue wire and black wire:** they cannot be connected simultaneously



### CODE INDICATION

	model	variant	shaft rotation	gear ratio
exemple of order	PDM 05 DELTA	E	S	1/5
description	meters	permanent micro-switch	left	with decimal

